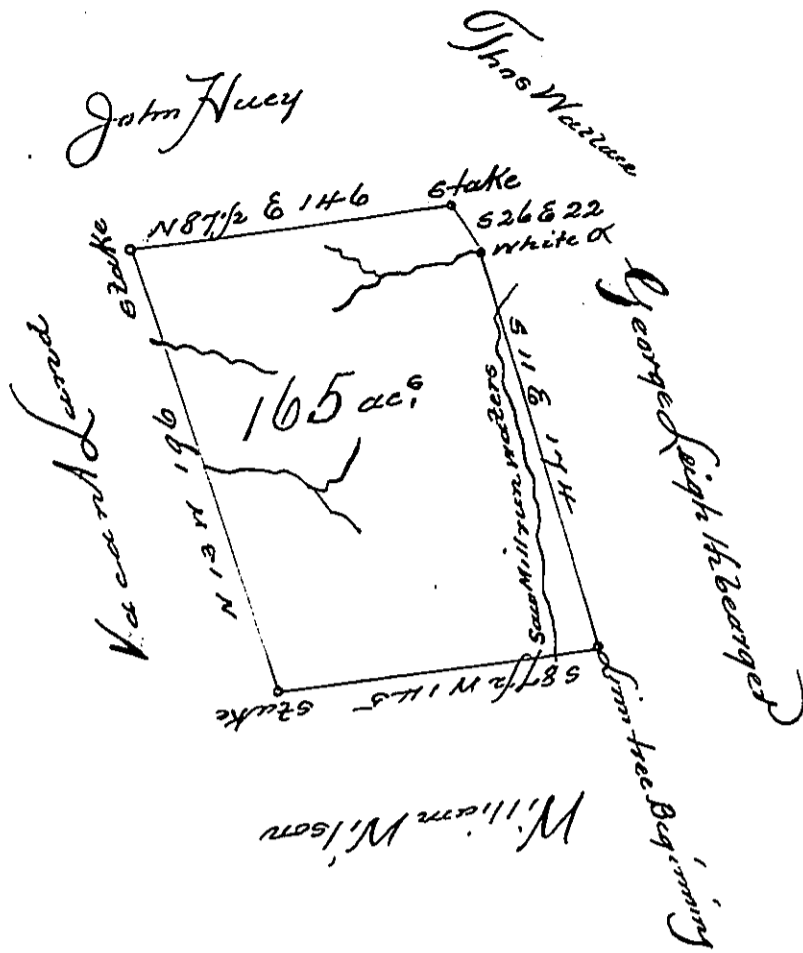


A-86

41
P40-25
2/89



A Draught of a Tract of Land Surveyed the 7th day of April 1794, in Pursuance of a Warrant granted to George Wallace for 150 acres dated the 30th day of August 1793. Situate North West of the Rivers Ohio Allegheny & Conawango Creek adjoining Land of William Wilson George Leigh McBearger and Thomas Wallace in Douglass's District on the waters of Saw Mill run called Detrey, containing one hundred and sixty five acres & the usual allowance of six ft. Cont.

To Daniel Brodhead Esq
Surveyor General

Jonathan Lee D. J.

IN TESTIMONY that the above is a copy of the original remaining on file in the Department of Internal Affairs of Pennsylvania, made conformably to an Act of Assembly approved the 16th day of February, 1833, I have hereunto set my Hand and caused the Seal of said Department to be affixed at Harrisburg, this seventh day of January, 1902,

James W. Latta
Secretary of Internal Affairs.